



Australian Government

Department of Climate Change, Energy, the Environment and Water

Australian Antarctic Division



AUSTRALIAN  
ANTARCTIC  
PROGRAM

# IMAS Taroona

Conservation, sustainability and climate research  
for the protection of our oceans

**Community Presentation**

July 2022



A collection of traditional Indigenous Australian objects is displayed on a light-colored, textured surface. In the foreground, there is a dark, polished wooden bowl with a braided cord around its rim. To its right is a large, shallow, reddish-brown clay bowl. In the background, there are several woven baskets made of natural fibers, some containing dark, smooth stones. The scene is set against a blurred background of green foliage.

## Acknowledgement of Country

We acknowledge the muwinina of lutruwita, the traditional owners of the land upon which we live and work.

We pay respect to Elders past and present as the knowledge holders and sharers. We honour their strong culture and knowledges as vital to the self-determination, wellbeing and resilience of their communities.

# Welcome

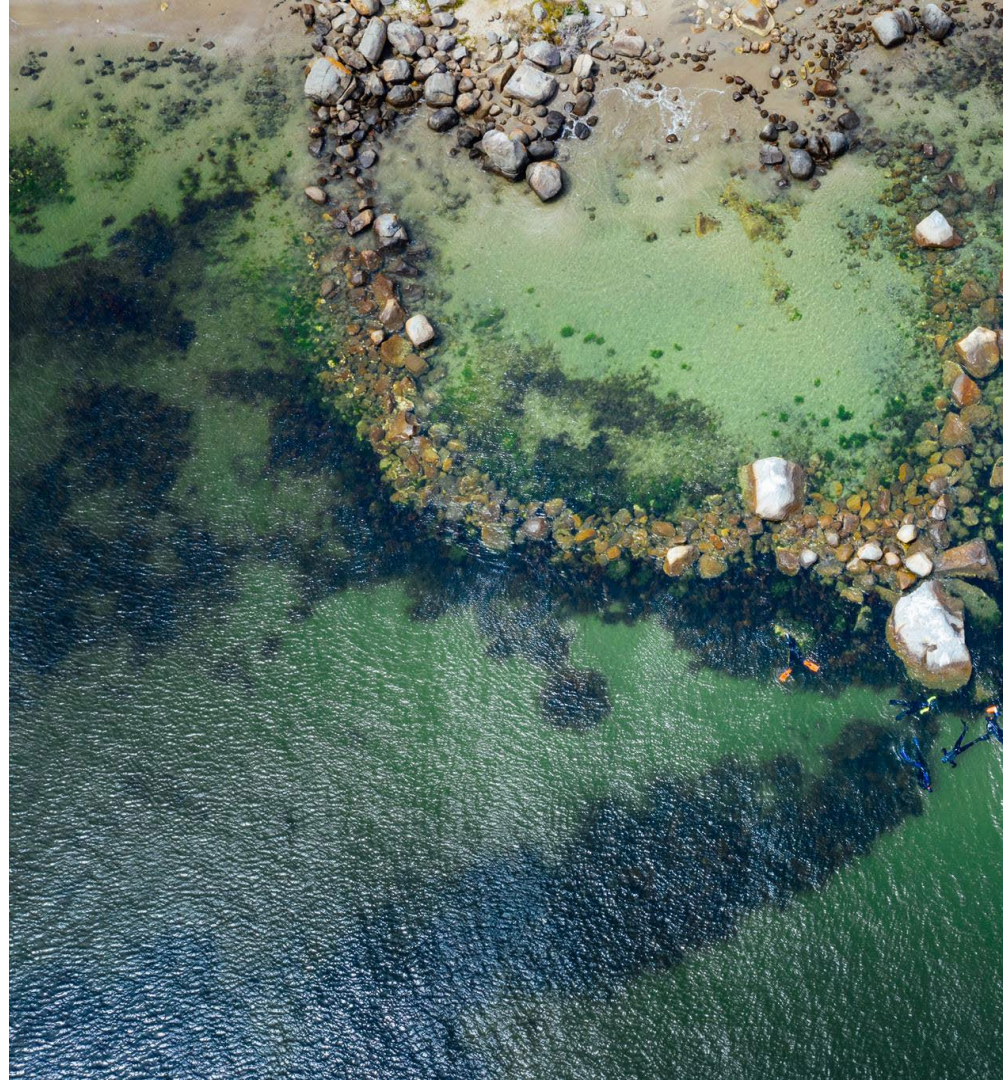
We're here to listen.

This evening we'd like to:

- Provide some information on a proposal to upgrade the IMAS Taroona facilities with a short presentation.
- Listen to your feedback and answer your questions.

The Team:

- Professor Caleb Gardner, IMAS
- Rob King, AAD
- Benn Turner, Preston Lane
- Phil Leersen, UTAS
- Gail Eagle, IMAS
- Rod Tremayne, UTAS





## COVID Safety

- Please maintain 1.5m physical distancing.
- Consider wearing a mask – available at the door.
- Please maintain hand hygiene:
  - Sanitiser is available at the door.
  - Hand-washing facilities are located in the bathrooms outside the entrance.

## Our consultation process

### We have consulted with:

- Community groups – Tarooma Community Association, Bonnet Hill Community Association, Tarooma Environment Network, Tarooma Football Club, Tarooma Primary School Association, Tarooma High School Association, Tarooma Bowls Club
- Ten peak bodies from the fisheries and aquaculture sector
- Kingborough Council
- Local MPs

### We have also contacted:

- Tarooma Volunteer Fire Brigade, Tarooma Tennis Club, Tarooma Scout Group, Tarooma Rugby Club

Our consultation process will continue throughout the development application process.



## About IMAS

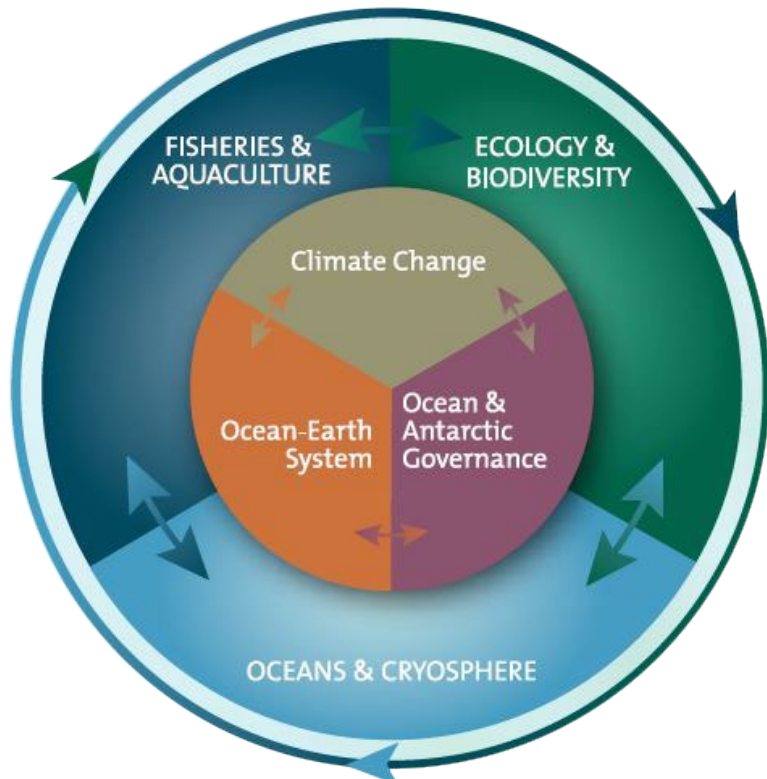
- Extraordinary people are doing extraordinary things at IMAS – on climate, species conservation, sustainability in our oceans and Antarctic science.
- This is reflected in our **international rankings**:
  - **Fourth in the world** for Marine and Freshwater Biology (2017 Center for World University Rankings)
  - **Seventh in the world** for both Fisheries and Oceanography (2017 Center for World University Rankings)
  - **Top 100** for Earth and Marine Sciences (2021 QS World University Rankings)
- IMAS projects contributed to UTAS earning the No.1 ranking in the world for climate action. (2022 Times Higher Education Impact Ratings)
- So what's changing at IMAS?



UNIVERSITY of TASMANIA



Institute for Marine and Antarctic Studies



### About AAD

- The Australian Antarctic Division (AAD) leads, coordinates and delivers the Australian Antarctic Program.
- The AAD is recognised as the world leader in aquarium research on Antarctic krill.
- Krill are a sentinel species for studying climate change, and as food for seabirds and whales, are vital to Southern Ocean ecosystems.
- Australia's scientists research Antarctic krill in the Southern Ocean and in our current aquarium lab at AAD in Kingston.
- Continuing our world leadership of krill science is dependent on having the best-possible facilities to carry out our research.
- So what's changing at AAD?





# About AAD

- The Australian Antarctic Division (AAD) leads, coordinates and delivers the Australian Antarctic Program.
- The AAD is recognised as the world leader in aquarium research on Antarctic krill.
- Krill are a sentinel species for studying climate change, and as food for seabirds and whales, are vital to Southern Ocean ecosystems.
- Australia's scientists research Antarctic krill in the Southern Ocean and in our current aquarium lab at AAD in Kingston.
- Continuing our world leadership of krill science is dependent on having the best-possible facilities to carry out our research.
- So what's changing at AAD?



# Our stewardship of the IMAS site

We acknowledge our responsibility for stewardship of this special location in Tarooma and are committed to:

- Its **environment**, including bushland, native species and water.
- Its **heritage**, including Aboriginal sites, historic structures and its role as a research facility since 1966.
- Its place in **the community**, including as a provider of education and jobs for local people, and its proximity to sporting fields, beaches, walking trails and homes.
- Its status under **planning legislation** with a detailed planning analysis prepared at the commencement of the project to guide site development and design.



# What's proposed for Taroona?

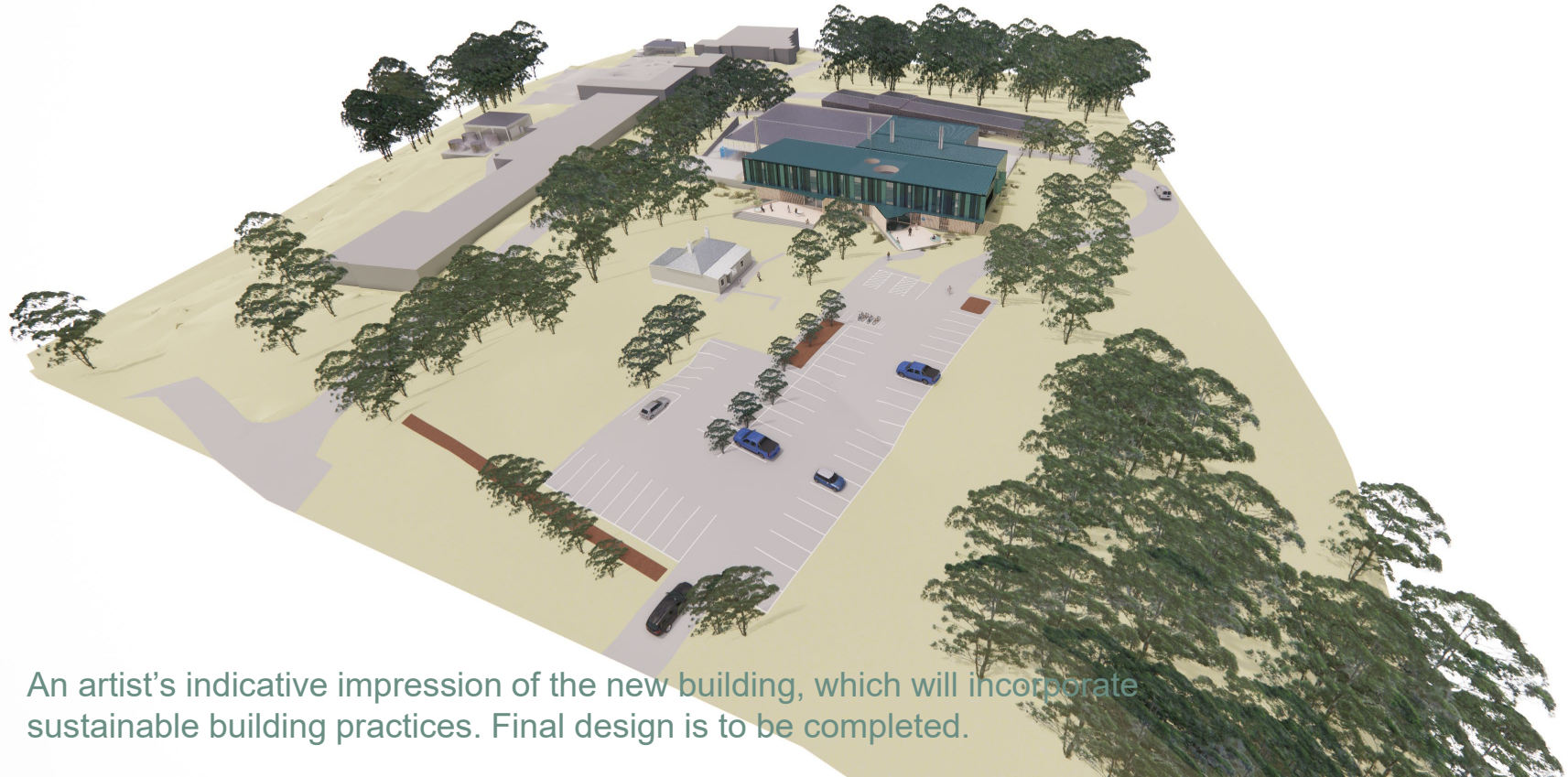
- IMAS will continue its work at Salamanca, while the specialist facilities already at Taroona get upgraded.
- A new building that includes a **teaching lab, wet lab and research facilities**.
- A connected **krill research aquarium** in partnership with the **Australian Antarctic Division**.
- **Renovations** to older buildings for better utilisation.
- A **54-space carpark** to better manage traffic and parking near the precinct.
- A new entrance that is a **welcoming face** to students, staff and the community.
- A **more accessible and attractive site** for students, staff and the community. For example, an ageing fence will be removed and a large area made accessible to the community.
- **Notes:** The *RSV Nuyina* **will not** dock at Taroona. All collaboration with industry and government would be **teaching or research related**.





An artist's indicative impression of the new building, which will incorporate sustainable building practices. Final design is to be completed.

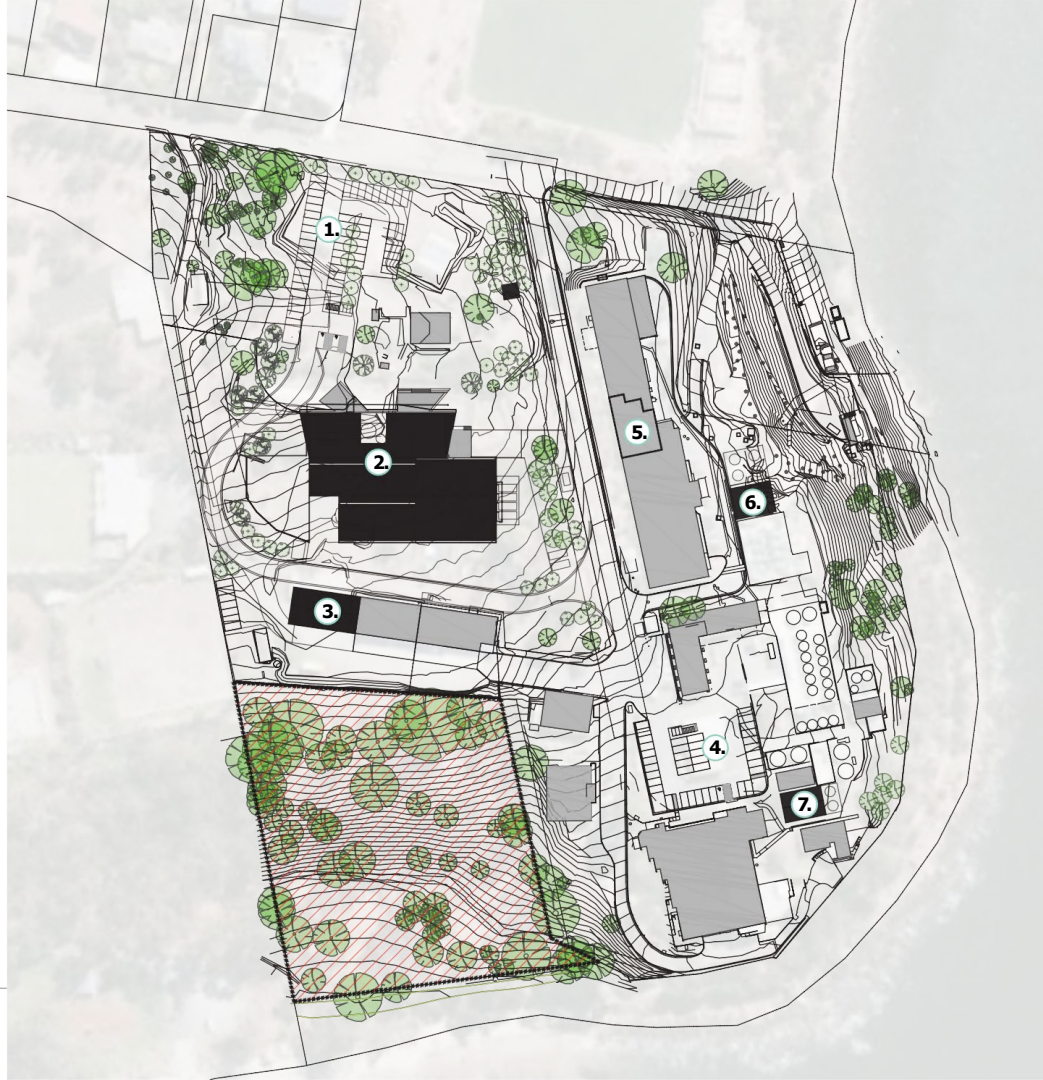
## The proposal



An artist's indicative impression of the new building, which will incorporate sustainable building practices. Final design is to be completed.

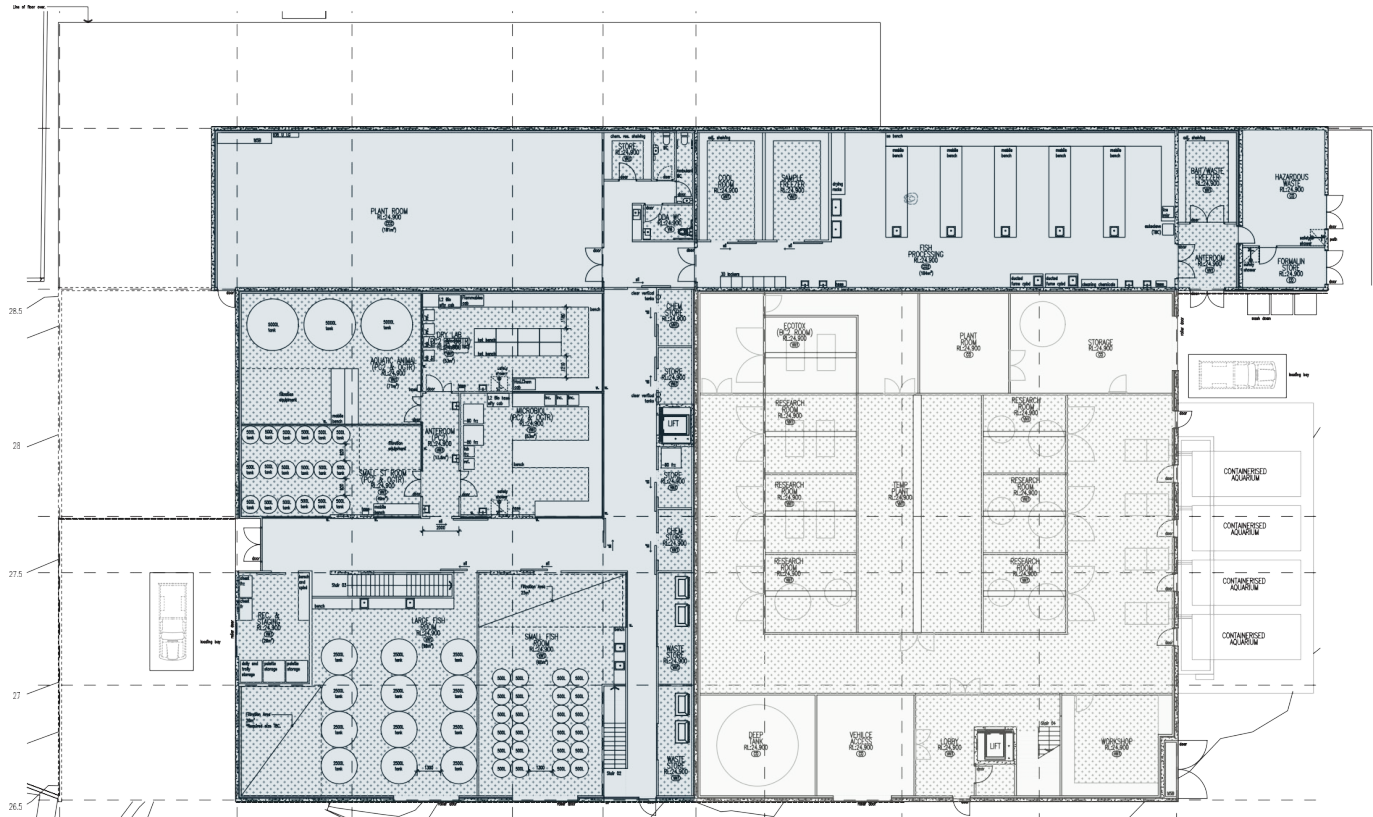
## LEGEND

- 1. new carpark**  
providing:
  - 54 car spaces
  - 2 equal access car spaces
  - 3 motorcycle spaces
  - 7 bicycle spaces
- 2. new building**  
including: research spaces, teaching spaces, and staff working spaces.
- 3. extension to existing boat shed**
- 4. modified internal car park**  
providing an additional:
  - 17 car spaces
  - 1 equal access car space
  - 3 motorcycle spaces
  - 8 bicycle spaces
- 5. internal fit out - laboratory**
- 6. extension to existing seawater filtration plant**
- 7. new seawater waste filtration plant**

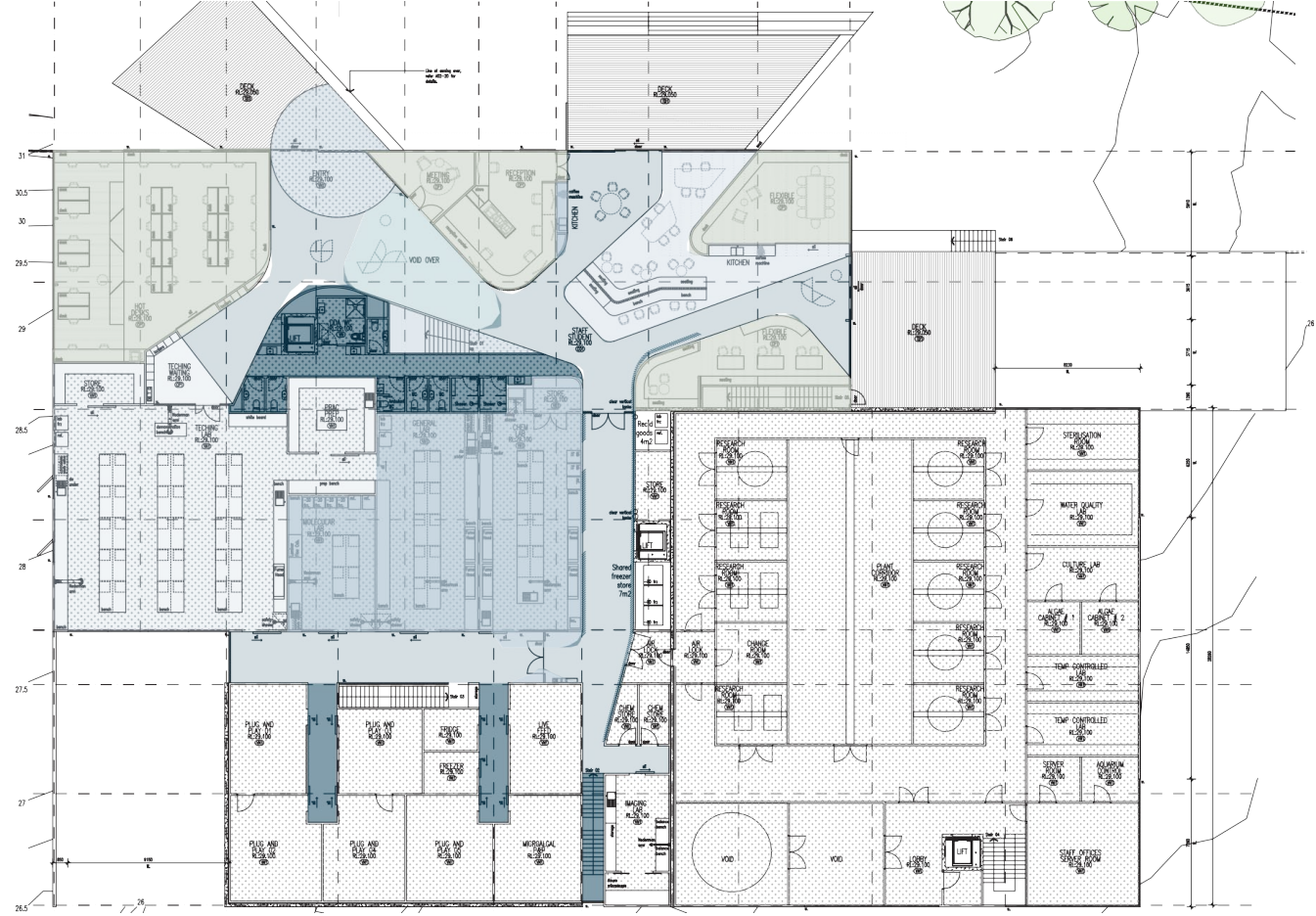


**SITE PLAN**  
not to scale





THE BUILDING PROMOTES A DISCUSSION OF WHAT THE FUTURE HOLDS



**IMAS TAROOMA**  
31 Rubena Crescent, Taroom

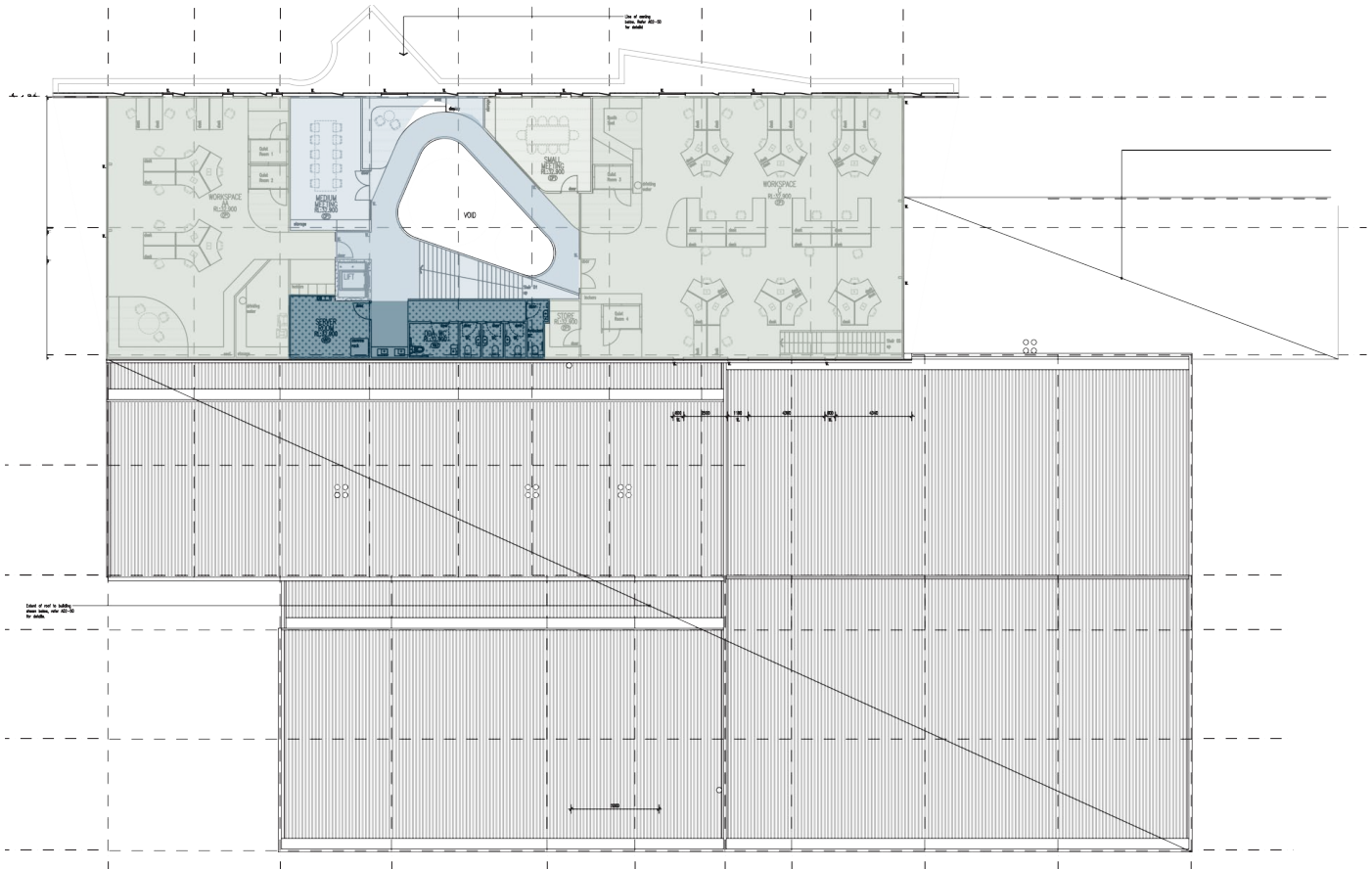
**FLOOR PLAN - GROUND FLOOR**  
not to scale



Thursday 7th July 2022

60 Barrack Street Hobart Tas 7000  
T 61 3 6231 2923





IMAS TAROONA  
31 Nubena Crescent, Taroona  
Thursday 7th July 2022

FLOOR PLAN - FIRST FLOOR  
not to scale



## A boost to marine and Antarctic research

- This upgrade will help our work on:
  - The conservation of **threatened species** like the handfish and maugean skate
  - Reducing the risks from toxic **algal blooms**
  - Minimising the environmental impact of **aquaculture**
  - Ensuring **fishing** can **continue sustainably** into the future
  - Informing the conservation and management of the **krill-based ecosystem** in the Southern Ocean



## A focus on sustainability

- **Sustainable building practices** will be embedded in the project. For example, sustainably grown timber and recycled plastics will be used. The new lab building will be financed in part by a **Green Bond**.
- A \$3.5 million upgrade to the site's water filtration system will improve our on-site **water management**.
- **Native coastal flora will be planted** on the site, ensuring habitat for local species and adding more trees than will be lost.
- **Tunnel crossings** will be built for native species safety.



## Numbers on campus

### Staff

- Currently: 95 permanent staff
- Expected increase: 25

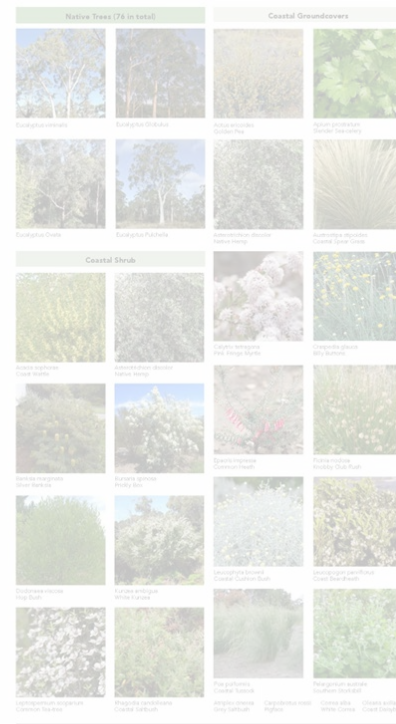
### Students

- Currently: 35 per day - all post-graduate
- **Undergraduate students** will begin attending the campus 1-3 days/week in 2024 to study specialist units in the latter years of their degrees.
- Maximum **undergraduate teaching capacity at any one time** will be 60 students across the new labs.
- By 2025, total student enrolments are expected to be 205 across undergraduate, honours, masters and PhD programs – **on site at different times**. A maximum of 119 students will be on site **at any one time**.



## Trees and landscaping

- **76 new trees** to be planted with seeds potentially collected from the current trees. 25 native/eucalypts of varying size to be removed. A **net gain of 51 eucalypts**.
- Weeds and exotics **removed**.
- Eight species of **native coastal shrub** added.
- Sixteen species of **native coastal ground covers** added.
- A **biodiversity corner** rehabilitated.
- Trees removed will come from mid-site, not the visible edges.



LEGEND:

- Existing Trees Proposed
- Coastal Shrub 1m
- Coastal Groundcover 1m
- Coastal Shrub 1.5m
- Coastal Groundcover 1.5m
- Coastal Shrub 2m
- Coastal Groundcover 2m
- Coastal Shrub 3m
- Coastal Groundcover 3m
- Coastal Shrub 4m
- Coastal Groundcover 4m
- Coastal Shrub 5m
- Coastal Groundcover 5m
- Coastal Shrub 6m
- Coastal Groundcover 6m
- Coastal Shrub 7m
- Coastal Groundcover 7m
- Coastal Shrub 8m
- Coastal Groundcover 8m
- Coastal Shrub 9m
- Coastal Groundcover 9m
- Coastal Shrub 10m
- Coastal Groundcover 10m

NOTE: Any existing native trees to be removed will have their seeds collected by local environmental groups prior to removal. The seeds will then be used to propagate new trees to be planted across the site.



## Minimising traffic impact

- UTAS will promote the use of **active and public transport**:
  - Metro buses to Nubeena Crescent, through our membership of the Southern Transport Forum
  - Taroon's bike lane infrastructure, already well used by IMAS staff, with the inclusion of **end-of-trip facilities**
- A new 54-space car park plus an upgrade to internal spaces, **a total of 131 spaces (plus 15 for bikes)**.
- Classes - and hence most car movements - would be constrained to **business hours**, Monday-Friday.



## Minimising traffic impact

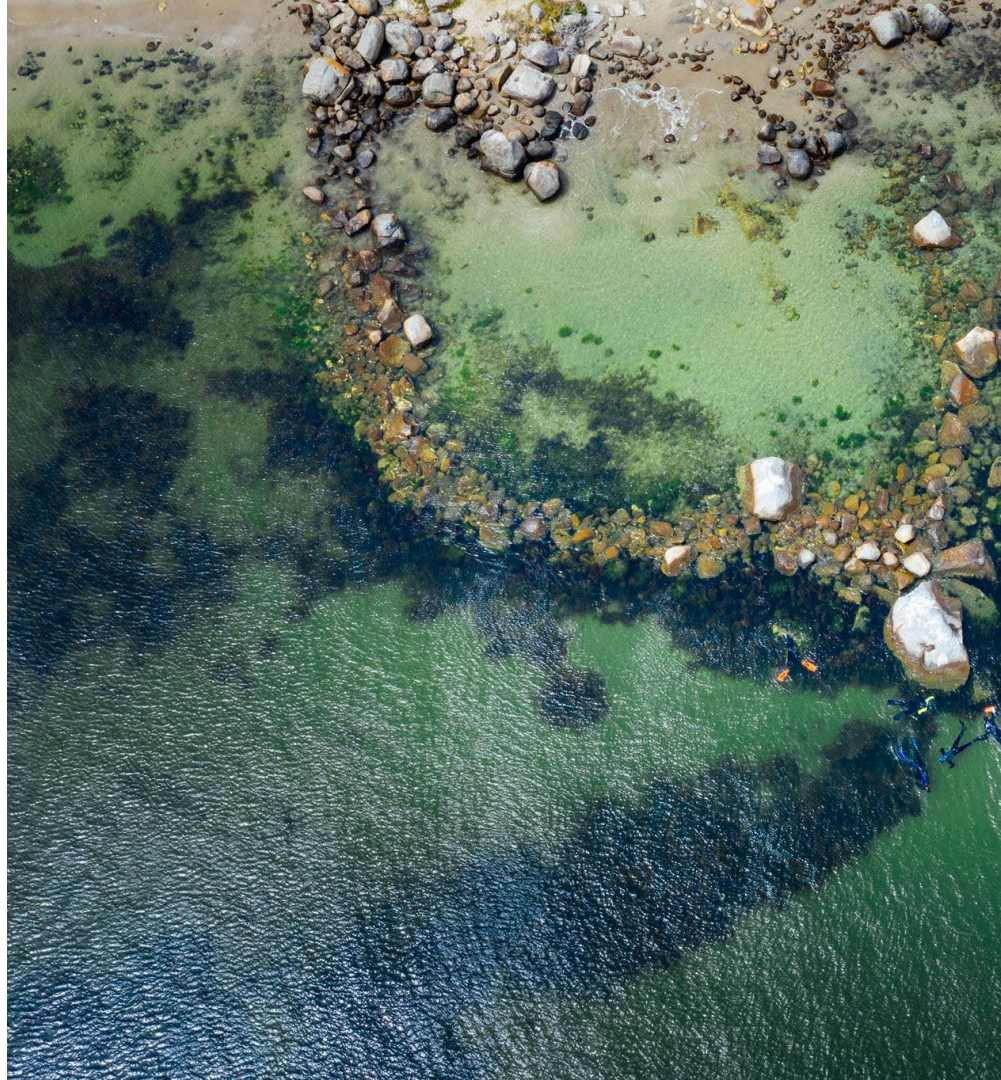
- The free **Uni Hopper** mini-bus would provide services between IMAS Salamanca and Taroona, minimising car use.
- An increase from 116 vehicles per day generated by the IMAS facility to 178 per day.
- Heavy vehicle movements would be **unchanged**.
- Working with Kingborough Council on improvements and safety measures, with recommendations to be provided by a traffic modeller.





# Benefits to the community

- The site would be made **more accessible and attractive**, with more space open to the community.
- The heritage of the **historic quarantine cottage**, built in the 1920s, would be restored.
- A new car park would ensure local streets are safer and will be **available for community and sports club use** outside business hours.
- The **decommissioned pump station** would be demolished, improving the foreshore.
- With 32 per cent of IMAS staff living in Kingborough, it would **consolidate teaching and research jobs** in the community.
- Our existing links with **Taroona High School's Exploring the Ocean** program would be enhanced. The proximity of these world class labs could continue to inspire the next generation of marine scientists.
- Decades of research in the vital areas of **climate and ocean sustainability**, that's put the Taroona facility on the world map, would continue and be enhanced.





# Feedback & Questions

[Southern.Future@utas.edu.au](mailto:Southern.Future@utas.edu.au)

[Steven.Whiteside@awe.gov.au](mailto:Steven.Whiteside@awe.gov.au)





# Thank you

Please **register** to receive more information.

Provide **your feedback** at:

[Southern.Future@utas.edu.au](mailto:Southern.Future@utas.edu.au)

Let us know if you'd like to **meet with us**.

