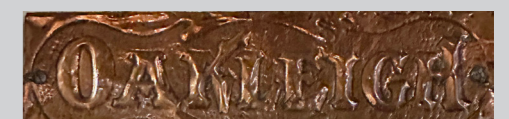
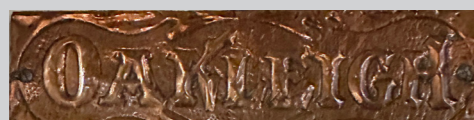
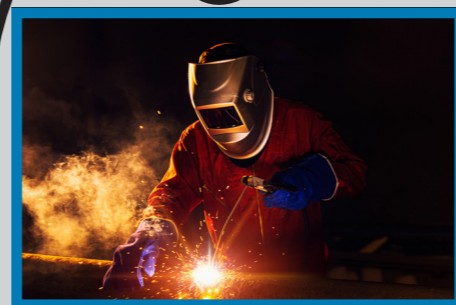




**YOU ARE A  
TIME TRAVELLER WITH ONLY  
A TORCH, A MAGNIFYING  
GLASS AND A PENCIL AND  
YOU HAVE JUST GONE...**

**BACK  
TO JULY**  
**12TH 1900 5.30 PM**

Look inside the shops and connect the present with the past. Which shops in the past connect to these modern things. Draw a line from the modern image in the blue box to the old sign to show which store you think they belong in. There are clues on the back if you are stuck.





### The Printery

The Printery was the home of the local newspaper. This is where the newspaper was printed, along with advertising posters, public notices and many other documents.



### The Blacksmith's Workshop

Known as the blacksmith's forge, this is where the blacksmith made a wide variety of items out of iron for everyday use on farms, in homes and by other trades people such as farriers, wheel wrights and carriage builders.



### Mr. Evans - The Bootmaker

Everybody needs shoes and Ned Evans made and repaired shoes and boots out of leather in a variety of sizes and styles. Saddles and harness for horses were also made out of leather.



### Mr. Dudfield's Store

As the proprietor of a general store, gift shop and stationers. Mr. Dudfield sold all sorts of essential and useful items for everyday use in homes and on farms, from clothes pegs to sugar and flour.



### Tasma Studio

Before digital photography, even before every family owned a film camera, the Winter family were the local photographers. They recorded every aspect of public and domestic life on the North-West Coast in photographic images.




### The Butter Factory

A daily chore for many people was to milk the house cow, separate the cream from the skim milk, churn the cream until it turned to butter, then wash, salt and wrap the butter for use in the kitchen.


**The Printery**  
If you owned the printery what would you call your newspaper?

Answer:




**The Blacksmith's Workshop**  
Count the number of horse shoes on the wall.

Answer:




**Mr. Evans - The Bootmaker**  
Find the name on the jars on the advertisement. What did these jars contain when they were for sale?

Answer:




**Provision Merchant and fancy repository**  
What brand of chewing gum is in the window of the store?

Answer:



**Tasma Studio**  
What was the machine on the back wall used for?

Answer:



**The Butter Factory**  
What is next to the butter wrapped in orange paper?

Answer:



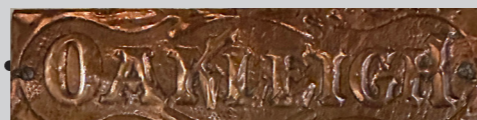

### The Carpenter's Workshop

Mr. Kenner built many fine buildings in Burnie. He and his carpenters used hand tools, such as chisels, mallets, saws, planes and lathes to make all the wooden parts of a building.



### The Washhouse or Scullery

This is where the clothes were washed and the washing up was done. Boots were cleaned and all other dirty jobs were performed rather than in the house. Before electrical appliances, this was hard and tedious work that had to be done by hand.



### The Kitchen

The fuel stove needed kindling and firewood to keep the fire alight for cooking. It was also used for heating pots of water for bathing, and for heating the flat irons for ironing the clothes. It was an essential item in every house and the centre of every home.



### The Parlour

As the best room in the house, this is where the family gathered every evening and where guests might be entertained. This was the room to display the family's treasures. It was also a place to read, do craftwork, repair clothes, and catch up on each other's news.



### The Dentist

The Lucadou-Wells family attended to people's oral needs.



### The Emu Bay Inn


Early hotels were a welcome sight for tired travellers. They could find a drink, a meal, a stable for the horse and a bed for the night. The Wiseman family owned several hotels in the Burnie area.

**The Carpenter's Workshop**  
Draw the time on the clock





**The Washhouse**  
Find what was used to 1. Wash clothes 2. Clean the floor 3. Warm a bed

Answer:




**The Kitchen**  
Find the toast rack

Answer:



**The Dentist**  
What is the machine on the left hand side of the chair?

Answer:



**RETURN YOUR TIME TRAVELLER TOOLS AND RECEIVE A STAMP**

- ★CLIPBOARD
- ★TORCH
- ★MAGNIFYING GLASS



These resources were designed by children, families and volunteers at the Burnie Regional Museum as part of the Limitless Learning Project