



Our Accommodation

JULY 2024

UNIVERSITY of
TASMANIA 

Our Accommodation

Join one of our vibrant residential colleges by living near or on-campus. You'll make friends and share an amazing lifestyle.

Choosing our Residential Colleges means joining a vibrant community with events, programs, and support services. We offer a variety of room types to suit every student's needs, from self-contained apartments to single rooms with shared facilities. We also offer plenty of financial support to keep your rental costs affordable. This gives you access to a community designed to support your academic, social, and wellbeing needs — all on a student's budget.

Hobart accommodation

Hobart is a perfect slice of urban living on the edge of pristine World Heritage areas. Study in the heart of the city, on the harbour, or by the beach.

Hytten Hall, which incorporates Hobart Apartments, is our college in the Hobart CBD. A mix of self-contained studios and shared apartments, they're a short walk to our city campuses.

For those seeking a little more tranquillity, Sandy Bay is an oasis of calm, less than 10 minutes drive from the city. Christ College and St John Fisher College are located in Sandy Bay. They offer single rooms with shared facilities and multi-bedroom apartments.

Jane Franklin Hall is a fully-catered residential college that is affiliated with the University of Tasmania, but is operated independently. If you would like to live at Jane you will need to contact them directly to make an application.

Launceston accommodation

Tasmania's second-largest city, Launceston, offers you easy access to creative, sporting, and outdoor experiences. Our revitalised Inveresk campus, with cutting-edge and purpose built facilities in the heart of Launceston, is complete.

Our Inveresk Apartments, located on the Inveresk campus, offer self-contained studio ensembles with their own kitchen and private bathroom. Living here will place you conveniently near the inner city, alongside the Queen Victoria Museum and Art Gallery. Our spacious campus overlooks the stunning kanamaluka / Tamar River.

At Investigator Hall, which incorporates Newnhan Apartments, you'll find a blend of single rooms with shared facilities and studio ensembles. Home to the Australian Maritime College, our Newnham campus continues to offer world leading maritime simulation and teaching facilities.

Cradle Coast accommodation

Our brand-new Cradle Coast campus offers modern, world-class facilities on Burnie's spectacular waterfront – where little penguins are regular visitors, and whales have been spotted from our classrooms.

Located on campus, our West Park Apartments offer self-contained studio living, with their own kitchen, bathroom and study space overlooking the ocean.

Here, you'll become part of a vibrant community while being immersed in flexible, hands-on learning experiences unique to the North West.

All our accommodation includes the following services and amenities:

Amenities

- Fully furnished, including bed and mattress, built-in wardrobe, mirror, desk and drawers
- Community kitchen
- Common rooms
- Bike Storage
- On-site fully equipped laundry with dryers
- Single gender apartment, house, or corridor (available upon request)
- Single gender bathrooms or private bathroom availability

Services

- WiFi internet access
- Utilities (electricity and water)
- On-site 24-hour Security
- All buildings security card only access
- On-site community events
- On-site support and wellbeing

LAUNCESTON AND CRADLE COAST – NORTHERN TASMANIA

Accommodation facilities	Investigator Hall	Newnham Apartments	Inveresk Apartments	West Park Apartments
Weekly costs	\$232*	\$241*	\$248*	\$176*
Location	Newnham	Newnham	Inveresk	Cradle Coast
Room	Single room	✓		
	Studio (ensuite room)		✓	✓
Bedding availability	King single or standard single bed	Queen bed	Queen bed	Queen bed
Bathroom	Shared single-gender bathroom	✓		
	Private bathroom (ensuite)		✓	✓
Min. Lease length*	42 weeks (full academic year) OR 21 weeks (single semester)	min. 42 weeks	min. 42 weeks	min. 42 weeks
Total rooms	110	180	120	40
In-room TV	Available in community areas	Available in community areas	Available in community areas	Available in community areas
Wheelchair accessible room and amenities		✓	✓	✓
On-site low cost café and dining options	✓	✓	✓	
On-site car parking (additional fees apply)	✓	✓	Limited	✓
Catering included in weekly cost				

The University of Tasmania is part of the National Rental Affordability Scheme (NRAS). This means we can offer high-quality, purpose-built accommodation to students in fantastic locations at more affordable prices.

*Costs listed are per week for 2024 and are subject to change and NRAS eligibility. Refer to the website for the most up-to-date information.



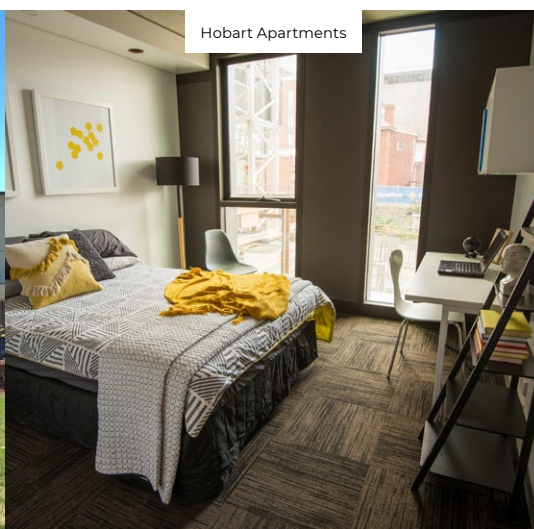
HOBART – SOUTHERN TASMANIA

Accommodation facilities	University Apartments	Christ College	John Fisher College	Jane Franklin Hall	Hobart Apartments	Hyttan Hall
Weekly costs	\$292*	\$205–\$292*	\$283*	\$522*	\$319*	\$336–\$366*
Location	Sandy Bay	Sandy Bay	Sandy Bay	South Hobart	Hobart CBD	Hobart CBD
Room	Single room	✓	✓	✓		
	Double room (single capacity)			✓		
	Twin-share room		✓			
	Single room in multi-bedroom apartment	✓	✓	✓		✓
Studio (ensuite room)				✓	✓	✓
Bedding availability	King single or standard single bed	King single or standard single bed	King single or standard single bed	King single in single occupancy rooms. King single or double bed in double and ensuite rooms	Queen bed	King single or standard single bed
Bathroom	Shared single-gender bathroom	✓	✓	✓		✓
	Shared mixed-gender bathroom			✓		
	Private bathroom (ensuite)			✓	✓	✓
Min. Lease length*	42 weeks (full academic year) OR 21 weeks (single semester)	42 weeks (full academic year) OR 21 weeks (single semester)	42 weeks (full academic year) OR 21 weeks (single semester)	40 weeks (tailored to the academic year) OR 39 weeks (returning students)	50 weeks	52 weeks
Total rooms	173	201	110	190	446	422
In-room TV	✓	Available in community areas	Available in community areas	Available in community areas	Available in community areas	Available in community areas
Wheelchair accessible room and amenities	✓	✓	✓		✓	✓
On-site car parking (additional fees apply)	✓	✓	✓	✓	Limited	
Catering included in weekly cost				✓		

*Costs listed are per week for 2024 and are subject to change and NRAS eligibility. Refer to the website for the most up-to-date information.



West Park Apartments



Hobart Apartments



Jane Franklin Hall

Jump into uni life

Being a member of one of our Residential Colleges is a great compliment to your academic success.

Our colleges offer events and programs ranging from intercollegiate sports competitions, formal and ceremonial dinners, arts and music competitions, social events and various academic supports.

Our Student Clubs create opportunities for you to make new friends, be supported by your peers and get involved in college and campus life.

Our Colleges are led by a team of Principals, Deans of Students and Residential Communities Officers who will help you settle in and make sure you are traveling well across your time at the University.

Joining one of our Colleges is to become a member of a proud tradition that reaches all the way back to the founding of the University.



Connection to place and culture

Develop an appreciation for the unique attributes of Tasmania, indigenous cultures, the University and other communities through resident field trips and place-based learning activities.



Formal and ceremonial dinners

Communities are built over conversations. Develop professional networks and experiences, exchange ideas creatively and intellectually and celebrate the richness of our community over shared meals.



Sustainability

Make meaningful real world contributions to Tasmania and the world through a diverse range of creative challenges. You can also check the sustainability portal for info about student programs and opportunities.



Future readiness and leadership

Establish networks and develop your employability and leadership potential by engaging in experiences that will extend and challenge you within the University, community and industry.



Campus sport

Represent your community in weekly sports competitions including basketball, badminton, futsal, netball and more. You can also access regular fitness, wellbeing, and general health programs.



Arts and performance

Get involved in a wide range of inter-community activities where you will make long-lasting friendships and explore diverse interests recreationally or competitively... well, socially competitively at least.

Safety and security

In addition to on-site security and maintenance, we provide residents in our accommodation with technology, training and support to build a culture of physical and personal safety. This includes security staff who are there 24-hours a day keeping you safe, a SafeZone app giving you easy access to university security and our staff are trained in COVID-safe practices.

Cost and scholarship opportunities

Moving can be expensive, but we're here to make it easier and more affordable. Relocation bursaries may be available, depending on your individual circumstances. These help to cover the costs associated with moving.

Visit utas.edu.au/scholarships



How to apply

Applying to one of our Residential Colleges is easy and can be done online. To get started, register for an account and then follow the steps on the online form.

Our residents are required to reapply every year. However, if you want to keep your room, we'll always do our best to accommodate that.

Visit utas.edu.au/accommodation

"Moving down here was one of the best decisions I've ever made... Hobart is an amazing city."

Kat who moved from Sydney with a scholarship





For more information visit utas.edu.au/accommodation

Published November 2023. For the most up-to-date information please view our website at utas.edu.au | CRICOS 00586B