



Our Accommodation

APRIL 2024

UNIVERSITY of
TASMANIA 

Our Accommodation

Join one of our vibrant residential colleges by living near or on-campus. You'll make friends and share an amazing lifestyle.

Our Residential Colleges have accommodation to suit every student's needs, from self-contained apartments to single rooms with shared kitchen facilities. We also offer plenty of financial support to keep your rental costs affordable. This gives you access to a community designed to support your academic, social, and wellbeing needs – all on a student's budget.

Hobart accommodation

Hobart is a perfect slice of urban living on the edge of pristine World Heritage areas. Study in the heart of the city, on the harbour, or by the beach.

Hytten Hall, which incorporates Hobart Apartments, is our college in the Hobart CBD. A mix of self-contained studios and shared apartments, they're a short walk to our city campuses.

For those seeking a little more tranquillity, Sandy Bay is an oasis of calm, less than 10 minutes drive from the city. Christ College and St John Fisher College, which incorporate University Apartments, are located in Sandy Bay. They offer single rooms with shared facilities and six-bedroom flats.

Jane Franklin Hall is a fully-catered residential college that is affiliated with the University of Tasmania, but is operated independently. If you would like to live at Jane you will need to contact them directly to make an application.

Launceston accommodation

Tasmania's second-largest city, Launceston, offers you easy access to creative, sporting, and outdoor experiences. Our revitalised Inveresk campus, with cutting-edge and purpose built facilities in the heart of Launceston, is complete.

The Inveresk campus is conveniently located near the inner city, alongside the Queen Victoria Museum and Art Gallery. Our spacious campus overlooks the stunning kanamaluka / Tamar River.

Home to the Australian Maritime College, our Newnham campus will continue to offer world leading maritime simulation and teaching facilities.

The University offers a range of convenient and comfortable accommodation options. These include studio apartments, on-campus accommodation, and more.

Cradle Coast accommodation

Our brand-new Cradle Coast campus offers modern, world-class facilities on Burnie's spectacular waterfront – where little penguins are regular visitors, and whales have been spotted from our classrooms.

Here, you'll become part of a vibrant community while being immersed in flexible, hands-on learning experiences unique to the North West.

LAUNCESTON – NORTHERN TASMANIA

Accommodation facilities	Investigator Hall Single	Newnham Apartments Single	Inveresk Apartments Single
Weekly costs	\$232*	\$241*	\$248*
Located on campus	Yes	Yes	Yes
Fully furnished	Yes	Yes	Yes
WiFi in every bedroom	Yes	Yes	Yes
Electricity included	Yes	Yes	Yes
Heating included	Yes	Yes	Yes
Free TV, DVD, Austar/Foxtel	Community areas	Community areas	Community areas
On-site community events	Yes	Yes	Yes
On-site support and wellbeing	Yes	Yes	Yes
On-site 24 hour security	Yes	Yes	Yes
All buildings security card only access	Yes	Yes	Yes
Wheelchair accessible room and amenities	No	Yes	Yes
King size single or standard single bed and mattress	Yes	Queen beds	Queen beds
Built-in wardrobe, mirror, desk and drawers	Yes	Yes	Yes
On-site fully equipped laundry with dryers	Yes	Yes	Yes
On-site low cost café and dining options	Yes	Yes	No
Can request single sex apartment, house or corridor	Yes	Yes	Yes
Single sex bathrooms available	Yes	Private bathroom	Private bathroom
Leases tailored to academic year Contract Period	Yes	min. 42 weeks	min. 42 weeks
On-site car parking (additional fees apply)	Yes	Yes	Yes (limited)
Part of a supportive community just for students	Yes	Yes	Yes
Catering included in weekly cost	No	No	No

The University of Tasmania is part of the National Rent Affordability Scheme (NRAS). This means we can offer high-quality, purpose-built accommodation to students in fantastic locations at a fraction of the normal price.

*Costs listed are per week for 2024 and are subject to change and NRAS eligibility. Refer to the website for the most up-to-date information.



HOBART SOUTHERN TASMANIA

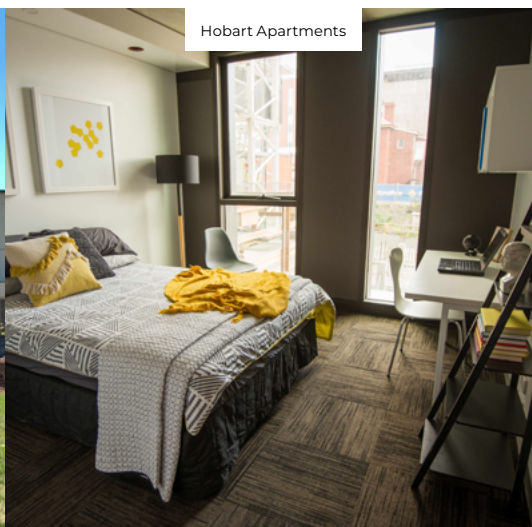
CRADLE COAST
NORTH WEST
TASMANIA

Accommodation facilities	University Apartments Single	Christ College Single	John Fisher College Single	Jane Franklin Hall Single	Hobart Apartments From \$319*	Hytten Hall \$336-\$366*	West Park Apartments Single \$176*
Weekly costs	\$292*	\$205-\$292*	\$283*	\$522*	From \$319*	\$336-\$366*	\$176*
Located on campus	Yes	Yes	Yes	No	Hobart CBD	Hobart CBD	Yes
Fully furnished	Yes	Yes	Yes	Yes	Yes	Yes	Yes
WiFi in every bedroom	Yes	Yes	Yes	Yes	Yes	Yes	Yes
Electricity included	Yes	Yes	Yes	Yes	Yes	Yes	Yes
Heating included	Yes	Yes	Yes	Yes	Yes	Yes	Yes
Free TV, Austar/Foxtel/pay TV	Yes	Community areas	Community areas	Community areas	Community areas	Yes	Community areas
On-site community events	Yes	Yes	Yes	Yes	Yes	Yes	Yes
On-site support and wellbeing	Yes	Yes	Yes	Yes	Yes	Yes	Yes
On-site 24 hour security	Yes	Yes	Yes	Yes	Yes	Yes	No
All buildings security card only access	Yes	Yes	Yes	Yes	Yes	Yes	Yes
Wheelchair accessible room and amenities	Yes	Yes	Yes	No	Yes	Yes	Yes
King size single or standard single bed and mattress	Yes	Yes	Yes	Long Single	Queen beds	Yes	Queen beds
Built-in wardrobe, mirror, desk and drawers	Yes	Yes	Yes	Yes	Yes	Yes	Yes
On-site fully equipped laundry with dryers	Yes	Yes	Yes	Yes	Yes	Yes	Yes
On-site low cost café and dining options	No	No	No	Yes	No	No	No
Can request single sex apartment, house or corridor	Yes	Yes	Yes	Yes	Yes	Yes	Yes
Single sex bathrooms available	Yes	Yes	Yes	Shared	Private bathroom	Yes	Private bathroom
Leases tailored to academic year	Yes	Yes	Yes	Yes	min. 50 weeks	min. 52 weeks	min. 42 weeks
On-site car parking (additional fees apply)	Yes	Yes	Yes	Yes	Yes (limited)	No	Yes
Part of a supportive community just for students	Yes	Yes	Yes	Yes	Yes	Yes	Yes
Catering included in weekly cost	No	No	No	Yes	No	No	No

*Costs listed are per week for 2024 and are subject to change and NRAS eligibility. Refer to the website for the most up-to-date information.



West Park Apartments



Hobart Apartments



Jane Franklin Hall

Jump into uni life

Residential Colleges is a great compliment to your academic success.

Our colleges offer events and programs ranging from intercollegiate sports competitions, formal and ceremonial dinners, arts and music competitions, social events and various academic supports.

Our Student Clubs create opportunities for you to make new friends, be supported by your peers and get involved in college and campus life.

Our Colleges are led by a team of Principals, Deans of Students and Residential Communities Officers who will help you settle in and make sure you are traveling well across your time at the University.

Joining one of our Colleges is to become a member of a proud tradition that reaches all the way back to the founding of the University.



Connection to place and culture

Develop an appreciation for the unique attributes of Tasmania, indigenous cultures, the University and other communities through resident field trips and place-based learning activities.



Formal and ceremonial dinners

Communities are built over conversations. Develop professional networks and experiences, exchange ideas creatively and intellectually and celebrate the richness of our community over shared meals.



Sustainability

Make meaningful real world contributions to Tasmania and the world through a diverse range of creative challenges. You can also check the sustainability portal for info about student programs and opportunities.



Future readiness and leadership

Establish networks and develop your employability and leadership potential by engaging in experiences that will extend and challenge you within the University, community and industry.



Campus sport

Represent your community in weekly sports competitions including basketball, badminton, futsal, netball and more. You can also access regular fitness, wellbeing, and general health programs.



Arts and performance

Get involved in a wide range of inter-community activities where you will make long-lasting friendships and explore diverse interests recreationally or competitively... well, socially competitively at least.

Safety and security

In addition to on-site security and maintenance, we provide residents in our accommodation with technology, training and support to build a culture of physical and personal safety. This includes security staff who are there 24-hours a day keeping you safe, a SafeZone app giving you easy access to university security and our staff are trained in COVID-safe practices.

Cost and scholarship opportunities

Moving can be expensive, but we're here to make it easier and more affordable. Relocation bursaries may be available, depending on your individual circumstances. These help to cover the costs associated with moving.

Visit utas.edu.au/scholarships



How to apply

Applying to one of our Residential Colleges is easy and can be done online. To get started, register for an account and then follow the steps on the online form.

Our residents are required to reapply every year. However, if you want to keep your room, we'll always do our best to accommodate that.

Visit utas.edu.au/accommodation

"Moving down here was one of the best decisions I've ever made... Hobart is an amazing city."

Kat who moved from Sydney with a scholarship





For more information visit utas.edu.au/accommodation

Published November 2023. For the most up-to-date information please view our website at utas.edu.au | CRICOS 00586B